

The Postscript



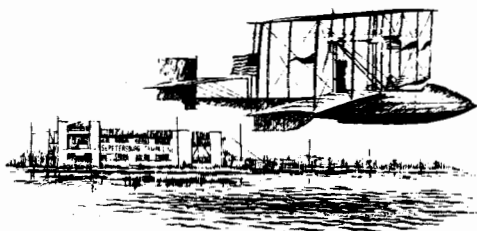
Tallahassee Stamp & Cover Club

Vol. 5 No. 2

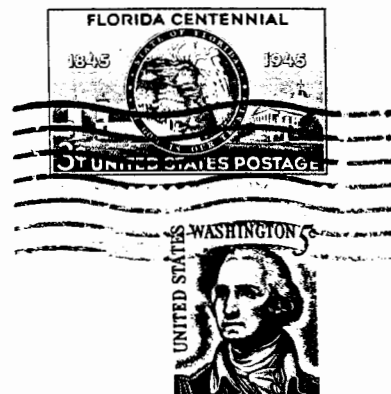
April - June 1995

SMITHSONIAN INSTITUTION
NATIONAL AIR AND SPACE MUSEUM
Milestones of Flight Commemorative Series

Number 11



60th ANNIVERSARY
First Regularly Scheduled Airline
Anthony Jannus piloting a Benoist Flying Boat
January 1, 1914, St. Petersburg to Tampa, Florida



Milestones of Flight
Smithsonian Institution
National Air & Space Museum
Washington, D. C. 20560

St. Petersburg to Tampa A Milestone Flight

By Larry Benson

On January 1, 1914, pilot Anthony (Tony) Jannus took off from St. Petersburg, Florida, headed for Tampa thus inaugurating the first scheduled airline flight in the United States. He was piloting a two wing Benoist flying boat.

An auction was held to determine who would be the first scheduled airline passenger. Former St. Pete Mayor A. C. Phiel won the bidding with a \$400 offer. The distance covered between the two cities was only 22 miles but driving by car took the better part of half a day and if people went by rail, the trip took 12 hours to cover a roundabout route of 164 miles.

The first flight took only 23 minutes and the return trip with a good wind was only 20 minutes. Naming the airline the St. Petersburg Airboat Line, an advertising campaign soon was launched, in fact only one day after the flight was completed. The plan was to make two round trips a day between the two cities.

The Air Fare Certainly Was Affordable

The air fare was only \$5.00 each way! Passengers were allowed a maximum of 200 pounds, including the passengers' weight and that of their luggage. Any excess weight was charged at the rate of \$5.00 per 100 pounds.

[Please See Milestone - Page 2]

What's Up?

Frankly, I am afraid to ask!

We celebrated the 150th Anniversary of Florida Statehood in memorable fashion. That was followed immediately by Springtime Tallahassee. So, what's up next?

I am proud of the Club for jumping into the 150th Anniversary in such a professional manner. We could have left a void causing philatelists to wonder if there was a stamp club in Tallahassee. But, we didn't. So now we are "experts" at First Day Ceremonies and if we live long enough, and can remember, we will be professionals by the 200th Anniversary.

Identifying procedures, coordinating, and getting the job done without prior experience was challenging. Congratulations, and special thanks to **Mike Francis** for developing a significant and attractive cachet and for meeting all of our deadlines. Thanks to the Executive Team for their support and the members who served as ushers, cancelers and simply jumped in when a void had to be filled. Thanks to all of you for a job well done! I'm proud of you.

Springtime Tallahassee A Snap

After that, Springtime Tallahassee was a snap. We didn't have too much space, but we also did not have people eating hot dogs and dripping mustard right at our elbows, either. Were you nervous about the weather? Naw! Just another perfect Tallahassee day.

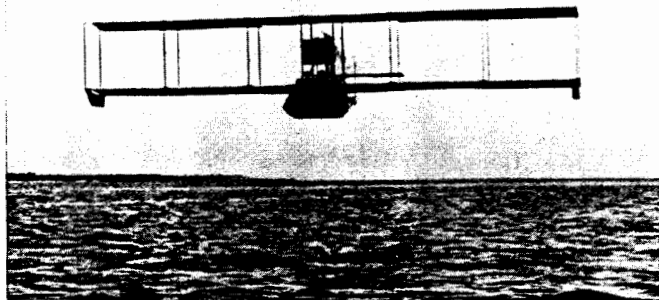
Once again, members who served at the kiosk were professional in promoting philately and the Club. We owe each a debt of gratitude.

What's up? Elections, that's what...and I'm tired. I suspect most of your Executive would like to enjoy a meeting without pressure and just relax. We have had a two year stint according to the by-laws and many have been in one office or another since the Club was formed. From what I've seen the Club accomplish in the past few months we shouldn't have any problems electing a new slate of officers for 1996. New faces, new ideas, new enthusiasm. Should we?

Don Plaskett, President

Milestone -- From Page 1

During January 1914, the first full month of operation, 184 passengers were carried on the air boat line. However, after only three months, the service was ended but this early airline had proved that carrying passengers by air was safe, feasible and popular.



The Benoist Flying Boat Over Tampa Bay

A total of 1,204 passengers had been carried safely and conveniently between St. Petersburg and Tampa during the few months the airline was in operation - a stepping stone to more sophisticated air travel which soon was to follow.

Linn's World Stamp Almanac A Must In Philatelic Library

If you can find a copy of Linn's *World Stamp Almanac*, grab it for your philatelic library. The latest issue is the Fifth Edition published in 1989. The Almanac isn't published every year. The latest edition took seven years to compile and update.

The contents are too broad to list here, but some of the chapters include: worldwide histories of the posts; U.S. postal history; U.S. stamp printing; worldwide postal agencies with addresses; local, national and international stamp clubs and organizations; national and international museums and libraries; stamp dealers' organizations and computers on stamps.

The Fifth Edition is out of print but Linn's probably has another on the drawing board. Watch for it.

Is Mover's Guide a Collectible?

Illustrated with this article is a copy of the cover of an 18 page USPS booklet containing helpful tips about moving. Prominently displayed below the title in capital letters readers are told a "CHANGE OF ADDRESS FORM (IS) IN MIDDLE OF BOOKLET." Between pages 8 and 12 is a U.S. Postal Service Change of Address Order which is already partially addressed back to the postmaster at the user's old address. What's more, no postage is necessary if it's mailed in the United States!

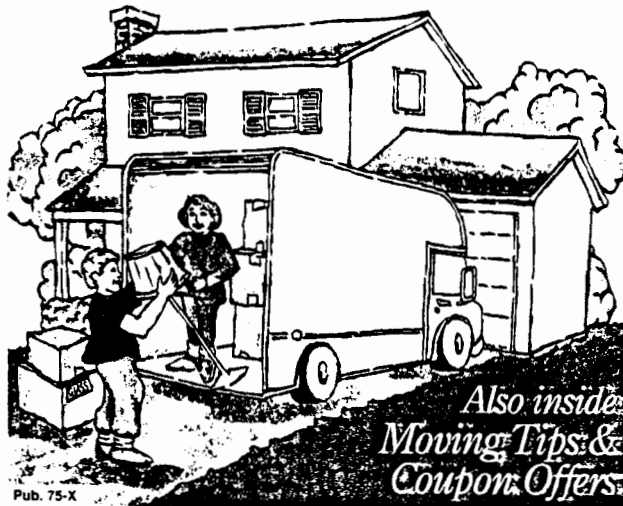
Now, the question is: Is this a philatelic collectible? The USPS and its new eagle logo are visible in several places within the booklet although there is a disclaimer in small print under the word Mover's on the cover stating the brochure was "Printed at no expense to the U.S. Postal Service or its customers." The booklet is copyrighted by Targeted Marketing Solutions, Inc., of New York City.

If you want a closer look at this publication, or if you are moving and need the booklet for that purpose, pick one up on the counter at the nearest post office. Then, maybe you can answer the question for yourself: Is the Mover's Guide a philatelic collectible?

MOVER'S GUIDE™

Printed at no expense to the U.S. Postal Service or its customers.

CHANGE OF ADDRESS FORM IN MIDDLE OF BOOKLET



Is this USPS "Mover's Guide" a philatelic collectible?

Welcome New Member...

We welcome to TS&CC new member # 105 Louis Chernoff who joined during Springtime Tallahassee. Let's all try to get one new member this year.

In The "POST ROAD" Ahead

Meetings are at 7:30 p.m. in the Art Annex of the Senior Citizen Center at corner of N. Monroe and 7th Avenue

July 11 - "Japan - World Prosperity Sphere"
By Steve Walsh

August 8 - "Handwriting On The Wall"
By Ralph Hager

September 12 - "WHAT? A Surprise"
By Guess Who?

GIVE STAMPS TO KIDS!

TS & CC Club Officers

President - Don Plaskett - 385-5296
Vice-President - Ken Miller - 386-4157
Secretary - Shirley Widd - 997-4358
Treasurer - Pat McDonald - 224-6590

The Postscript is the quarterly publication of Tallahassee Stamp & Cover Club
P. O. Box 653, Tallahassee, FL 32302
Editor - Larry Benson - 877-7001

Did You Know...

Although postage stamps became available in 1847, mailers had the option of sending their letters having recipients pay postage until 1855 when prepayment became compulsory?

Cover Sales Bring In \$885

TS&CC cover sales during the First Day Ceremony at the Capitol on March 3 and at our booth downtown at "Springtime Tallahassee" on April 3 of this year grossed \$885.19. Our net income, after expenses of \$317.50 for postage, printing, etc., was \$567.69.

Judging just from our profit, you would have to agree our two projects were successful. Beyond the money made for our Club treasury, we also got a lot of good publicity by having our name before the public.

We also signed up a new member, Louis Chernoff, and had a lot of other folks express an interest in Tallahassee Stamp & Cover Club.

Did You Know... Or Do You Care...

Starting on April 3, 1860, the Pony Express ran through parts of Missouri, Kansas, Nebraska, Colorado, Wyoming, Utah, Nevada and California? And, what's more, on an average day, a rider covered 75 to 100 miles!
I betcha didn't know that.

Tallahassee Stamp & Cover Club
P. O. Box 653
Tallahassee, FL 32302

FIRST CLASS MAIL

Bullseye Cancels Are Collectible And Fun To Look For

Have you ever considered collecting "bullseye" cancels? Don't know what they are? Read on.

Bullseye cancels, also called "socked-on-the-nose cancels," are those where the circular date stamp (CDS) hits the stamp right in the middle, or nearly in the middle. The CDS which is well centered on the stamp is the most desirable for your collection.

However, as long as most of the CDS shows on the stamp so the city, date, etc., can be read are also acceptable but just not quite as collectible.

Illustrated to the right is a bullseye cancel that is fairly well centered on the stamp. You should always look for the best centering possible.



Benjamin Franklin served as Postmaster General from July 26, 1775 until November 6, 1776.

FRIDAY 10 AM.
Between Dr & Broadway
1 block W of Hillcrest
to the corner

Edwin Walters
1313 Sweetbriar Dr.
Tallahassee, FL 32312